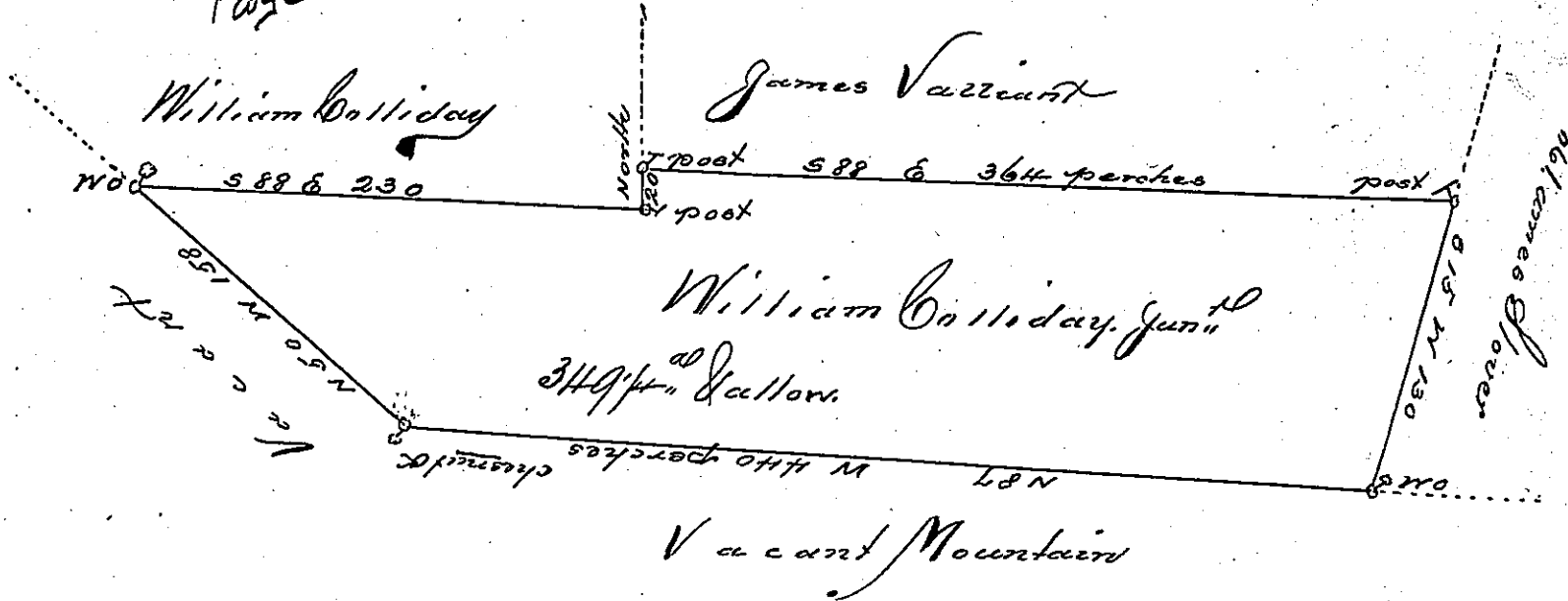


Page 8



Luzerne

A Draught of a Tract of land Called — Situate on the south side of
 Sawondia Creek adjoining land of William Colliday and others in
 the County of Northumberland Surveyed on the 8th day of July 1st 1785, for
 William Colliday Junr by virtue of his warrant bearing date the first
 day of July 1784, containing three hundred and forty nine acres and one
 quarter with the allowance of six per Cent for Roads &c.

To John Lukens Esqr
 Surveyor Genl

Jo. J. Wallis Esq

IN TESTIMONY that the above is a copy of the original remaining on file in
 the Department of Internal Affairs of Pennsylvania, made
 conformably to an Act of Assembly approved the 16th day of
 February, 1833, I have hereunto set my Hand and caused
 the Seal of said Department to be affixed at Harrisburg,
 this twenty first day of March, 1904

Isaac R. Brown
 Secretary of Internal Affairs.